

Legend:

- Norfolk Boreas onshore red line boundary
- Study area 500m
- Local authority boundary
- Landfall zone
- Registered park and garden ¹
- Landfall compound zone
- Conservation area ²
- Indicative landfall compound
- National park ³
- National character area ³
- Onshore cable route
- North Norfolk landscape character area ⁴
- Mobilisation zone
- Indicative mobilisation area compound
- Access
- Construction access
- Operation access

¹ Historic England, 2019
² Broadland Development Management Plan, 2014/
 North Norfolk Local Development Framework, 2008/
 Breckland Local Development Plan, 2012
³ Natural England, 2019
⁴ North Norfolk Landscape Character Assessment, 2018/
 Broadland District Council LDF Landscape Character
 Assessment Supplementary Planning Document (SPD), 2013/
 Breckland District Landscape Character Assessment, 2007

| | |
|-----------------------------------|---|
| Project: Norfolk Boreas | Report: Environmental Statement |
|-----------------------------------|---|

Title:
 Scenario 2
 Landscape Designations & Landscape Character Areas
 (map 1 of 9)

Figure: 29.13 **Drawing No:** PB5640-006-029-013

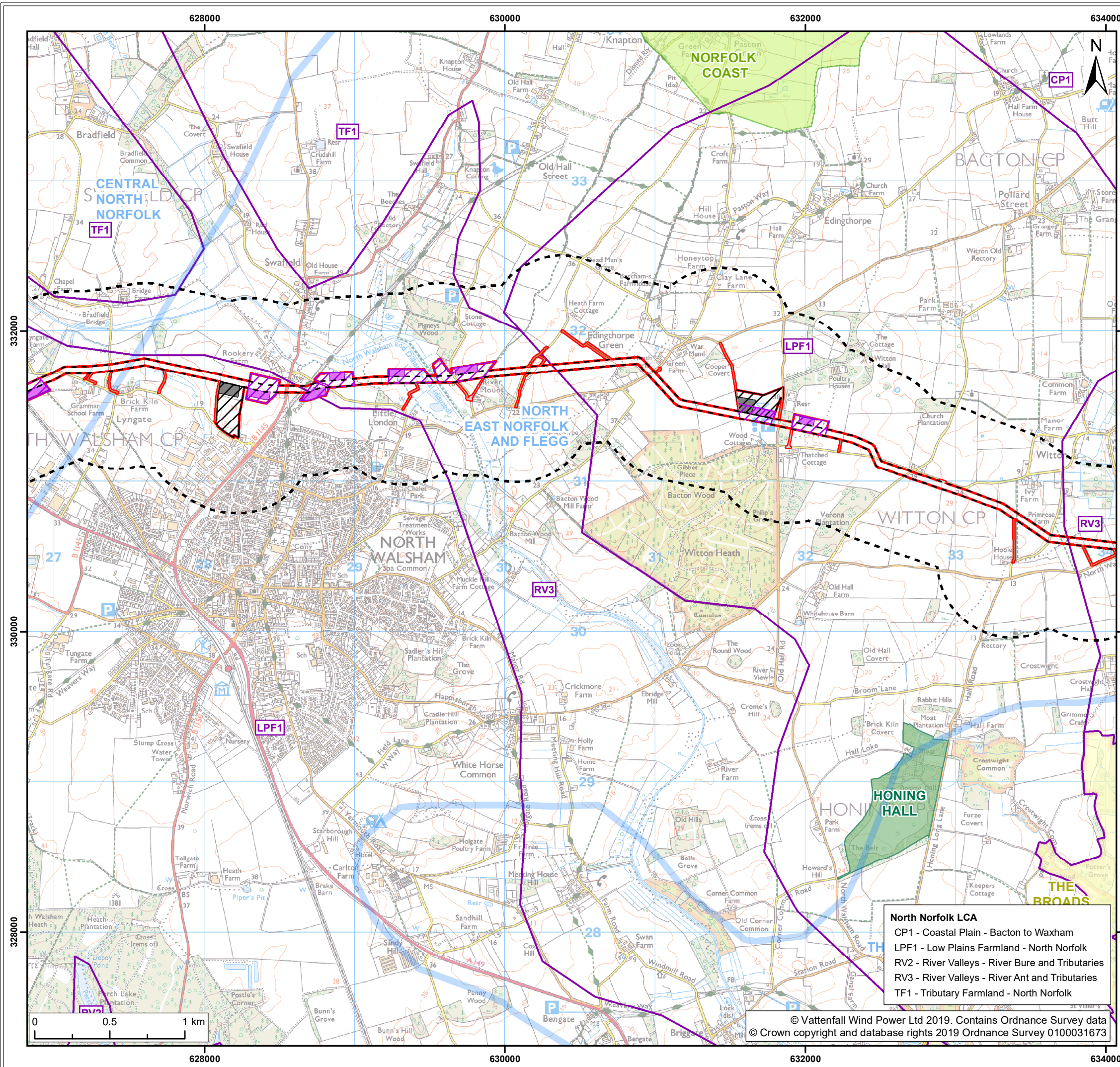
| Revision: | Date: | Drawn: | Checked: | Size: | Scale: |
|-----------|------------|--------|----------|-------|----------|
| 01 | 13/02/2019 | LA | JP | A3 | 1:25,000 |
| 02 | 21/02/2019 | LA | JP | A3 | 1:25,000 |

Co-ordinate system: British National Grid **EPSG:** 27700

VATTENFALL

Royal HaskoningDHV
Enhancing Society Together

North Norfolk LCA
 CP1 - Coastal Plain - Bacton to Waxham
 LPF1 - Low Plains Farmland - North Norfolk
 RV3 - River Valleys - River Ant and Tributaries



Legend:

- Norfolk Boreas onshore red line boundary
- Onshore cable route
- Trenchless crossing zone (e.g. HDD)
- Indicative trenchless crossing compound
- Mobilisation zone
- Indicative mobilisation area compound
- Construction access
- Operation access
- Study area 500m
- Local authority boundary
- Registered park and garden ¹
- National park ³
- Area of outstanding natural beauty (AONB) ³
- National character area ³
- North Norfolk landscape character area ⁴

Footnotes:

¹ Historic England, 2019
² Broadland Development Management Plan, 2014/
 North Norfolk Local Development Framework, 2008/
 Breckland Local Development Plan, 2012
³ Natural England, 2019
⁴ North Norfolk Landscape Character Assessment, 2018/
 Broadland District Council LDF Landscape Character Assessment Supplementary Planning Document (SPD), 2013/
 Breckland District Landscape Character Assessment, 2007

| | |
|-----------------------------------|---|
| Project: Norfolk Boreas | Report: Environmental Statement |
|-----------------------------------|---|

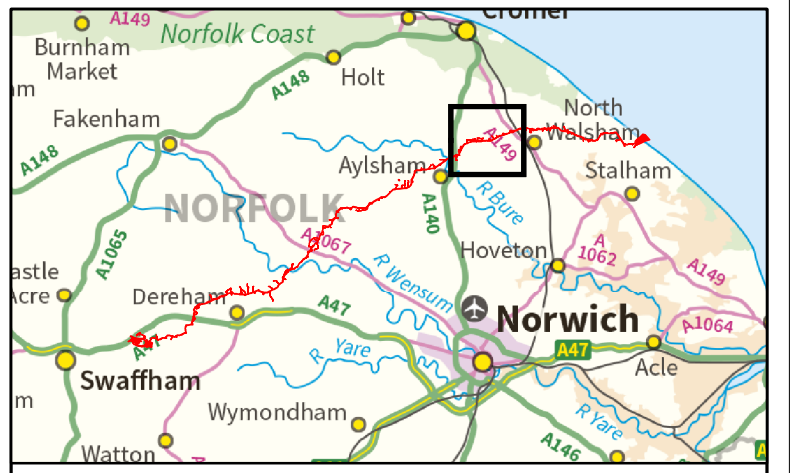
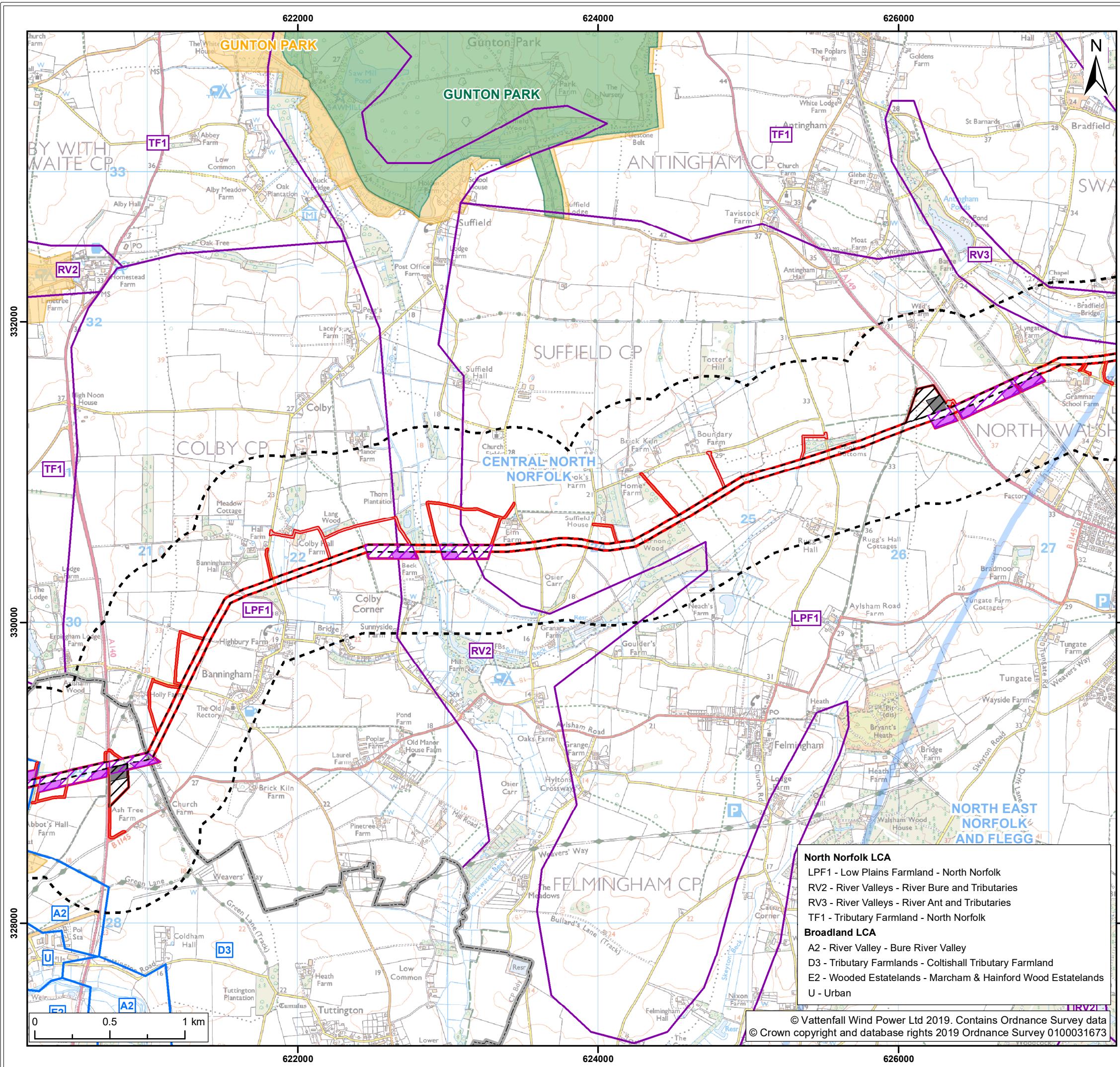
Title:
 Scenario 2
 Landscape Designations & Landscape Character Areas
 (map 2 of 9)

| | | | | | |
|----------------------|---------------------------------------|---------------|-----------------|--------------|---------------|
| Figure: 29.13 | Drawing No: PB5640-006-029-013 | | | | |
| Revision: | Date: | Drawn: | Checked: | Size: | Scale: |
| 01 | 13/02/2019 | LA | JP | A3 | 1:25,000 |
| 02 | 21/02/2019 | LA | JP | A3 | 1:25,000 |

Co-ordinate system: British National Grid **EPSG:** 27700

North Norfolk LCA
 CP1 - Coastal Plain - Bacton to Waxham
 LPF1 - Low Plains Farmland - North Norfolk
 RV2 - River Valleys - River Bure and Tributaries
 RV3 - River Valleys - River Ant and Tributaries
 TF1 - Tributary Farmland - North Norfolk





Legend:

- Norfolk Boreas onshore red line boundary
- Onshore cable route
- Trenchless crossing zone (e.g. HDD)
- Indicative trenchless crossing compound
- Mobilisation zone
- Indicative mobilisation area compound
- Construction access
- Operation access
- Study area 500m
- Local authority boundary
- Registered park and garden ¹
- Conservation area ²
- National character area ³
- North Norfolk landscape character area ⁴
- Broadland landscape character area ⁴

Footnotes:

¹ Historic England, 2019
² Broadland Development Management Plan, 2014/ North Norfolk Local Development Framework, 2008/ Breckland Local Development Plan, 2012
³ Natural England, 2019
⁴ North Norfolk Landscape Character Assessment, 2018/ Broadland District Council LDF Landscape Character Assessment Supplementary Planning Document (SPD), 2013/ Breckland District Landscape Character Assessment, 2007

| | |
|-----------------------------------|---|
| Project: Norfolk Boreas | Report: Environmental Statement |
|-----------------------------------|---|

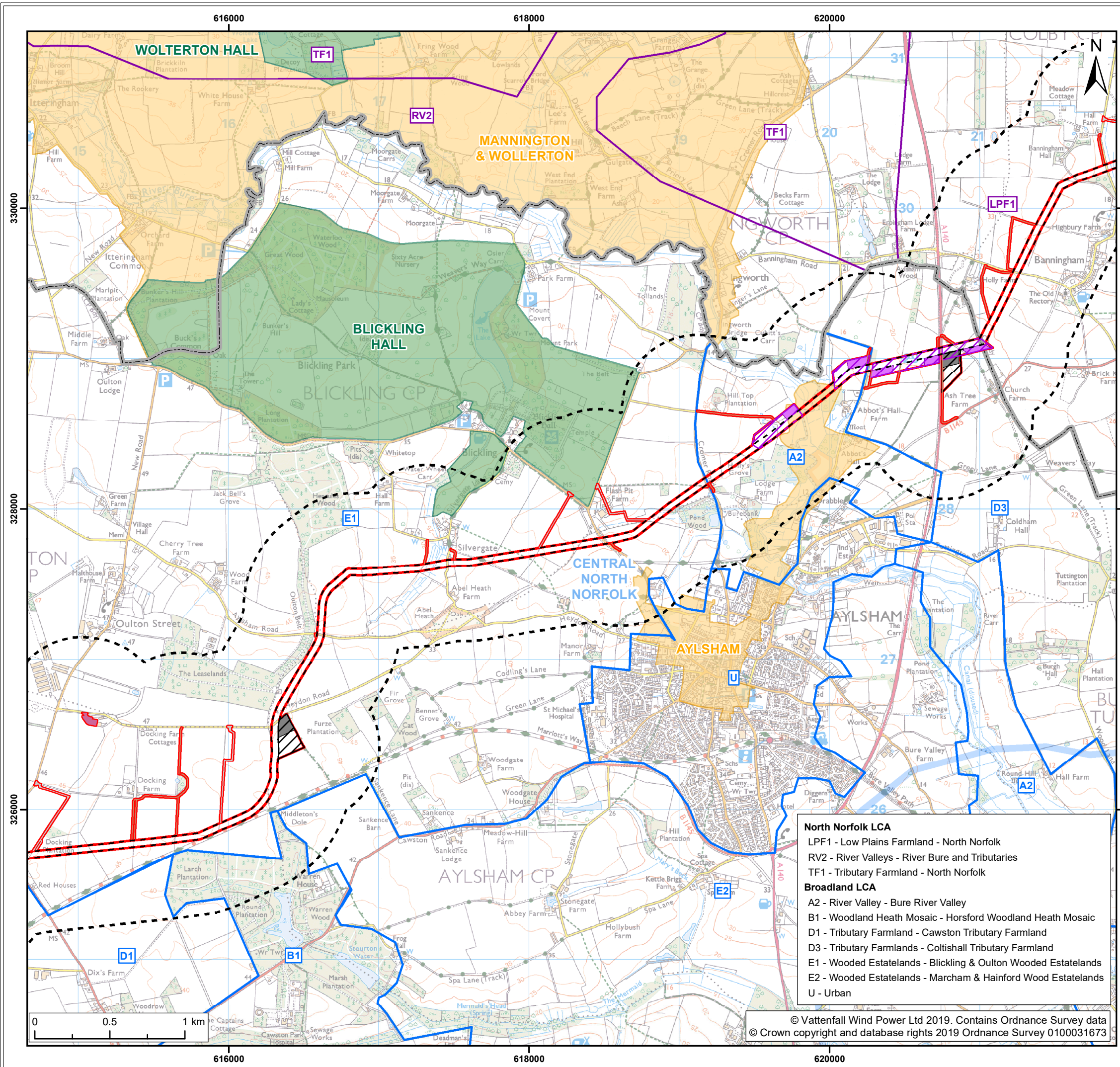
Title:
**Scenario 2
 Landscape Designations & Landscape Character Areas
 (map 3 of 9)**

| | | | | | |
|---------------|--------------------------------|--------|----------|-------|----------|
| Figure: 29.13 | Drawing No: PB5640-006-029-013 | | | | |
| Revision: | Date: | Drawn: | Checked: | Size: | Scale: |
| 01 | 13/02/2019 | LA | JP | A3 | 1:25,000 |
| 02 | 21/02/2019 | LA | JP | A3 | 1:25,000 |

Co-ordinate system: British National Grid EPSG: 27700

- North Norfolk LCA**
- LPF1 - Low Plains Farmland - North Norfolk
 - RV2 - River Valleys - River Bure and Tributaries
 - RV3 - River Valleys - River Ant and Tributaries
 - TF1 - Tributary Farmland - North Norfolk
- Broadland LCA**
- A2 - River Valley - Bure River Valley
 - D3 - Tributary Farmlands - Coltishall Tributary Farmland
 - E2 - Wooded Estatelands - Marcham & Hainford Wood Estatelands
 - U - Urban





North Norfolk LCA
 LPF1 - Low Plains Farmland - North Norfolk
 RV2 - River Valleys - River Bure and Tributaries
 TF1 - Tributary Farmland - North Norfolk

Broadland LCA
 A2 - River Valley - Bure River Valley
 B1 - Woodland Heath Mosaic - Horsford Woodland Heath Mosaic
 D1 - Tributary Farmland - Cawston Tributary Farmland
 D3 - Tributary Farmlands - Coltishall Tributary Farmland
 E1 - Wooded Estatelands - Blickling & Oulton Wooded Estatelands
 E2 - Wooded Estatelands - Marcham & Hainford Wood Estatelands
 U - Urban

© Vattenfall Wind Power Ltd 2019. Contains Ordnance Survey data
 © Crown copyright and database rights 2019 Ordnance Survey 0100031673



Legend:

- Norfolk Boreas onshore red line boundary
- Study area 500m
- Local authority boundary
- Onshore cable route
- Trenchless crossing zone (e.g. HDD)
- Registered park and garden ¹
- Conservation area ²
- National character area ³
- Indicative trenchless crossing compound
- Mobilisation zone
- North Norfolk landscape character area ⁴
- Indicative mobilisation area compound
- Cable logistics area
- Broadland landscape character area ⁴

Access

- Construction access
- Operation access

¹ Historic England, 2019
² Broadland Development Management Plan, 2014/
 North Norfolk Local Development Framework, 2008/
 Breckland Local Development Plan, 2012
³ Natural England, 2019
⁴ North Norfolk Landscape Character Assessment, 2018/
 Broadland District Council LDF Landscape Character
 Assessment Supplementary Planning Document (SPD), 2013/
 Breckland District Landscape Character Assessment, 2007

| | |
|-----------------------------------|---|
| Project: Norfolk Boreas | Report: Environmental Statement |
|-----------------------------------|---|

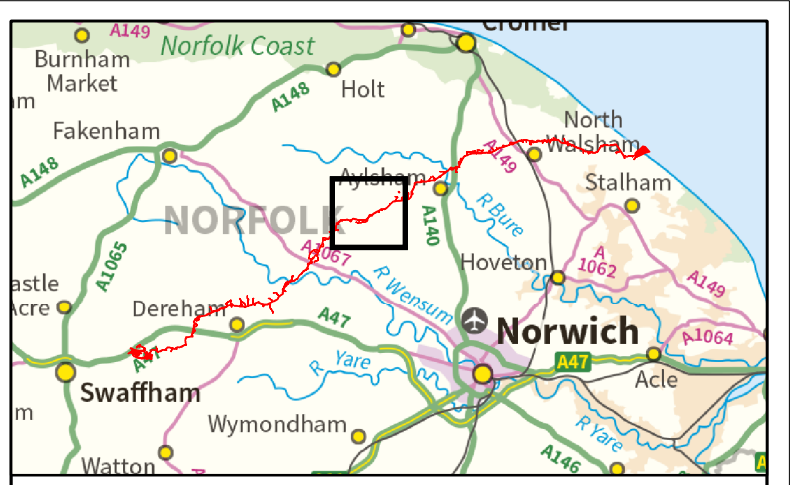
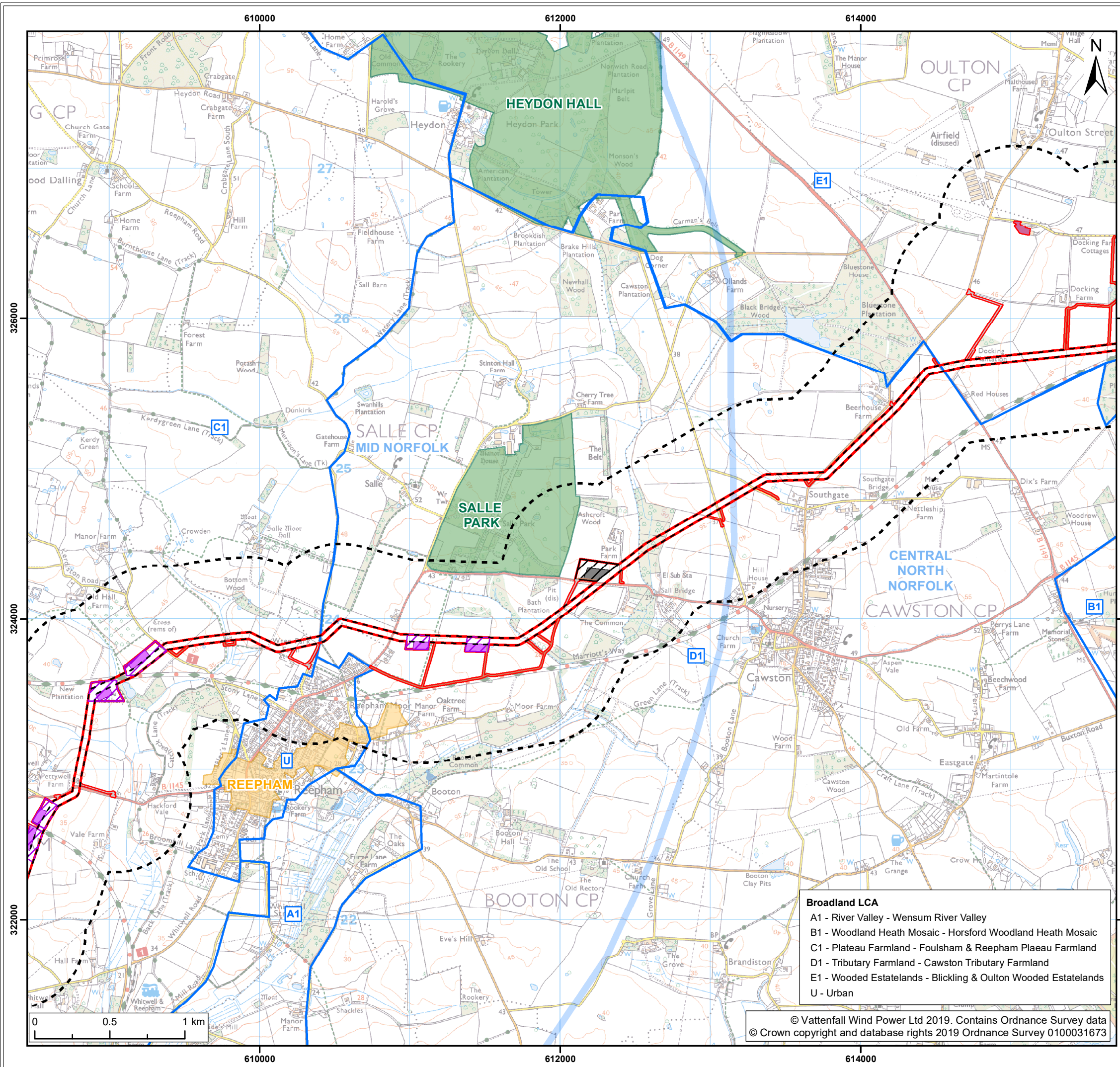
| | |
|---------------|--|
| Title: | Scenario 2 Landscape Designations & Landscape Character Areas (map 4 of 9) |
|---------------|--|

| | | | | | |
|------------------|--------------------------------|---------------|-----------------|--------------|---------------|
| Figure: 29.13 | Drawing No: PB5640-006-029-013 | | | | |
| Revision: | Date: | Drawn: | Checked: | Size: | Scale: |
| 01 | 13/02/2019 | LA | JP | A3 | 1:25,000 |
| 02 | 21/02/2019 | LA | JP | A3 | 1:25,000 |

Co-ordinate system: British National Grid **EPSG:** 27700

VATTENFALL

Royal HaskoningDHV
Enhancing Society Together



Legend:

- Norfolk Boreas onshore red line boundary
- Onshore cable route
- Trenchless crossing zone (e.g. HDD)
- Indicative trenchless crossing compound
- Mobilisation zone
- Indicative mobilisation area compound
- Cable logistics area
- Construction access
- Operation access
- Study area 500m
- Local authority boundary
- Registered park and garden ¹
- Conservation area ²
- National character area ³
- Broadland landscape character area ⁴

¹ Historic England, 2019
² Broadland Development Management Plan, 2014/ North Norfolk Local Development Framework, 2008/ Breckland Local Development Plan, 2012
³ Natural England, 2019
⁴ North Norfolk Landscape Character Assessment, 2018/ Broadland District Council LDF Landscape Character Assessment Supplementary Planning Document (SPD), 2013/ Breckland District Landscape Character Assessment, 2007

| | |
|-----------------------------------|---|
| Project: Norfolk Boreas | Report: Environmental Statement |
|-----------------------------------|---|

| |
|---|
| Title: Scenario 2 Landscape Designations & Landscape Character Areas (map 5 of 9) |
|---|

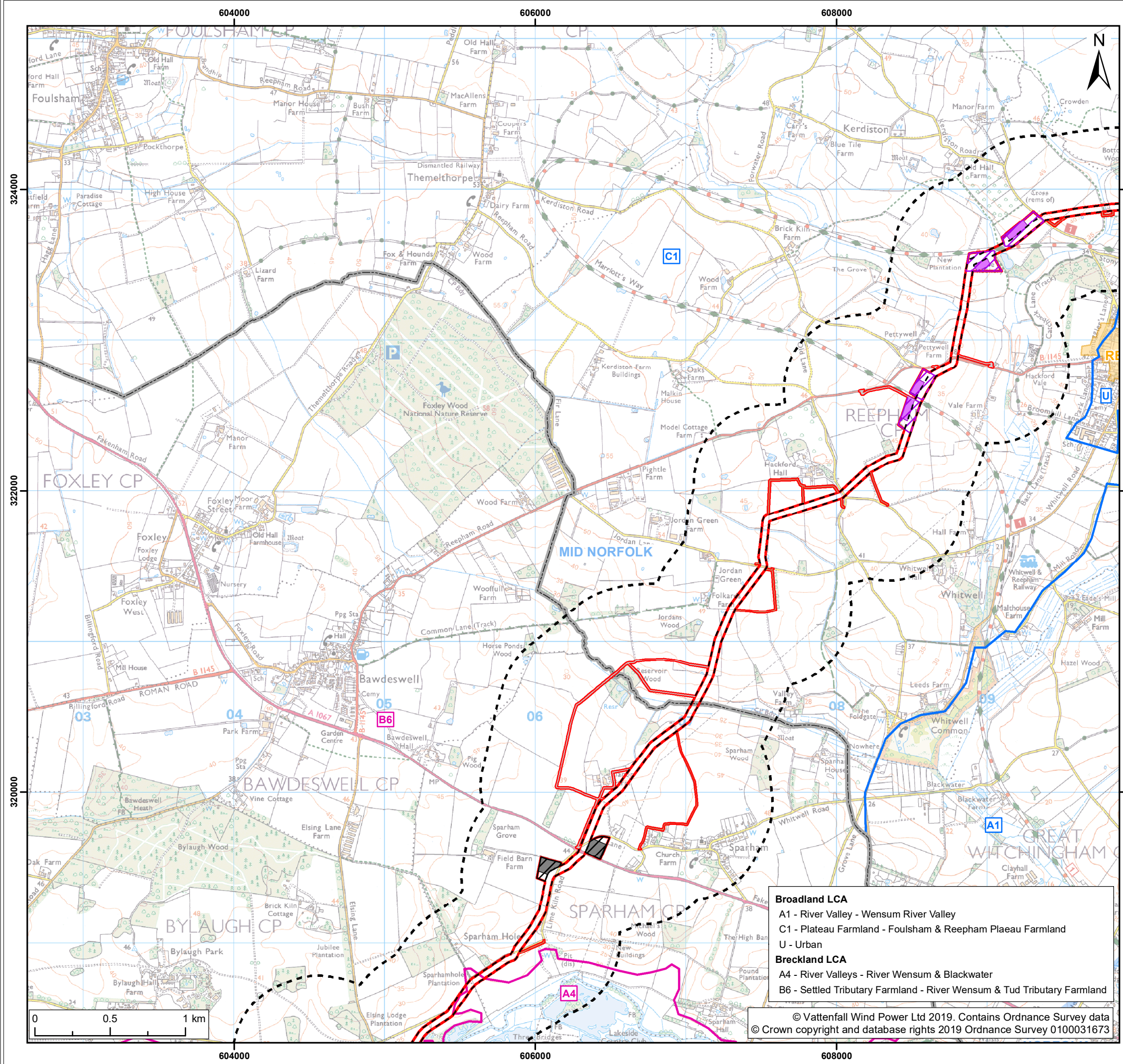
Figure: 29.13 Drawing No: PB5640-006-029-013

| Revision: | Date: | Drawn: | Checked: | Size: | Scale: |
|-----------|------------|--------|----------|-------|----------|
| 01 | 13/02/2019 | LA | JP | A3 | 1:25,000 |
| 02 | 21/02/2019 | LA | JP | A3 | 1:25,000 |

Co-ordinate system: British National Grid **EPSG:** 27700

- Broadland LCA**
- A1 - River Valley - Wensum River Valley
 - B1 - Woodland Heath Mosaic - Horsford Woodland Heath Mosaic
 - C1 - Plateau Farmland - Foulsham & Reepham Plateau Farmland
 - D1 - Tributary Farmland - Cawston Tributary Farmland
 - E1 - Wooded Estatelands - Blickling & Oulton Wooded Estatelands
 - U - Urban





Legend:

- Norfolk Boreas onshore red line boundary
- Onshore cable route
- Trenchless crossing zone (e.g. HDD)
- Indicative trenchless crossing compound
- Mobilisation zone
- Indicative mobilisation area compound
- Construction access
- Operation access
- Study area 500m
- Local authority boundary
- Conservation area ²
- National character area ³
- Broadland landscape character area ⁴
- Breckland landscape character area ⁴

¹ Historic England, 2019
² Broadland Development Management Plan, 2014/
 North Norfolk Local Development Framework, 2008/
 Breckland Local Development Plan, 2012
³ Natural England, 2019
⁴ North Norfolk Landscape Character Assessment, 2018/
 Broadland District Council LDF Landscape Character
 Assessment Supplementary Planning Document (SPD), 2013/
 Breckland District Landscape Character Assessment, 2007

| | |
|-----------------------------------|---|
| Project: Norfolk Boreas | Report: Environmental Statement |
|-----------------------------------|---|

| |
|---|
| Title: Scenario 2 Landscape Designations & Landscape Character Areas (map 6 of 9) |
|---|

Figure: 29.13 Drawing No: PB5640-006-029-013

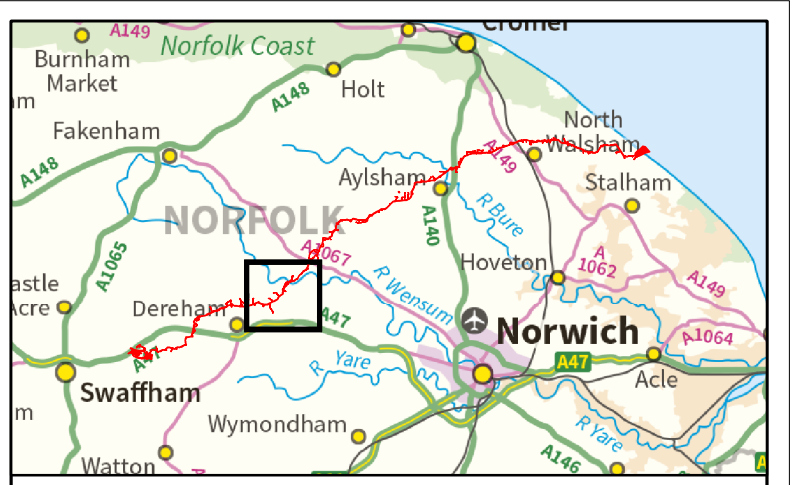
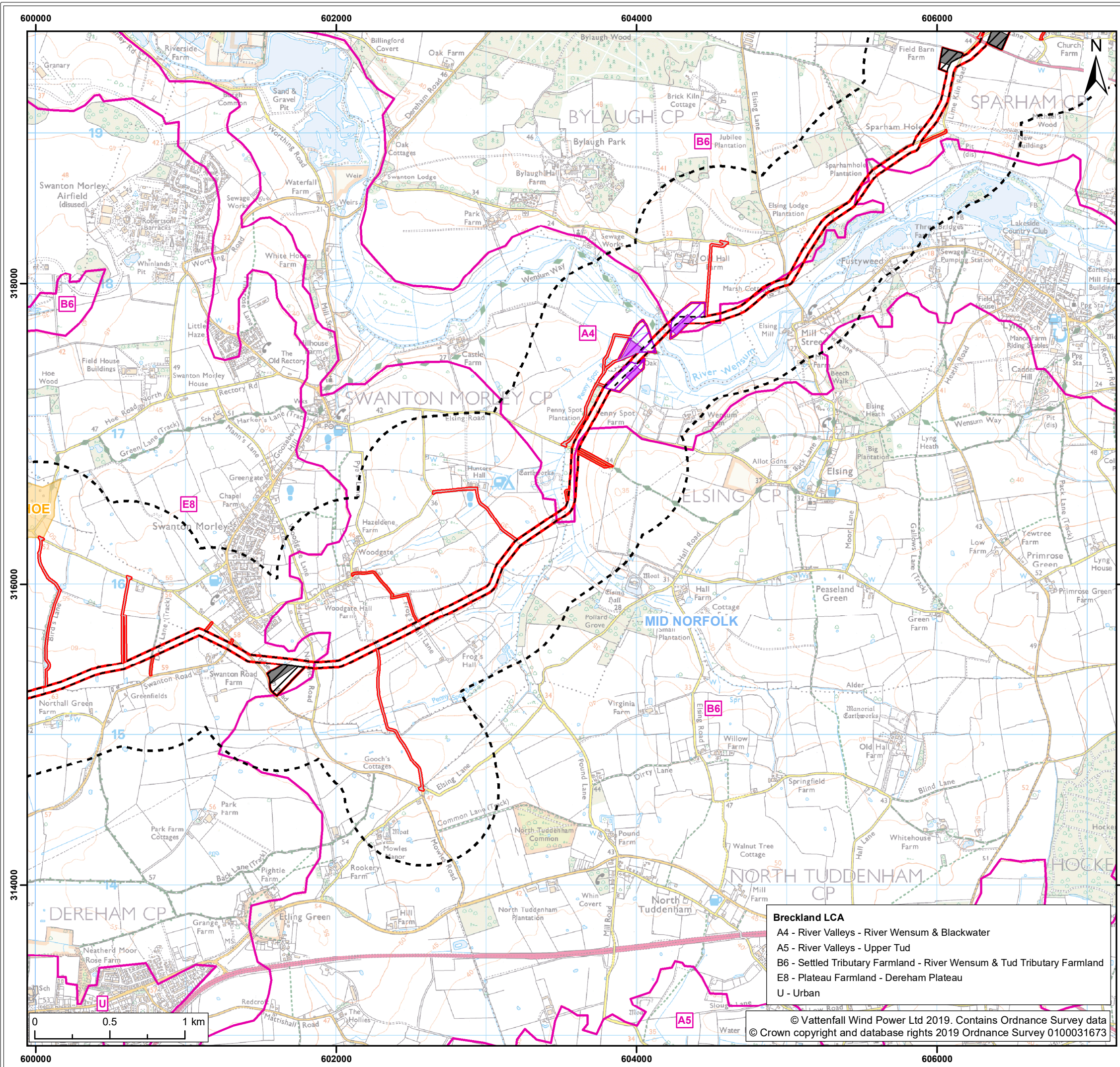
| Revision: | Date: | Drawn: | Checked: | Size: | Scale: |
|-----------|------------|--------|----------|-------|----------|
| 01 | 13/02/2019 | LA | JP | A3 | 1:25,000 |
| 02 | 21/02/2019 | LA | JP | A3 | 1:25,000 |

Co-ordinate system: British National Grid **EPSG:** 27700

- Broadland LCA**
 A1 - River Valley - Wensum River Valley
 C1 - Plateau Farmland - Foulsham & Reepham Plateau Farmland
 U - Urban
- Breckland LCA**
 A4 - River Valleys - River Wensum & Blackwater
 B6 - Settled Tributary Farmland - River Wensum & Tud Tributary Farmland

© Vattenfall Wind Power Ltd 2019. Contains Ordnance Survey data
 © Crown copyright and database rights 2019 Ordnance Survey 0100031673





Legend:

- Norfolk Boreas onshore red line boundary
- Study area 500m
- Local authority boundary
- Onshore cable route
- Conservation area ²
- Trenchless crossing zone (e.g. HDD)
- National character area ³
- Indicative trenchless crossing compound
- Breckland landscape character area ⁴
- Mobilisation zone
- Indicative mobilisation area compound
- Construction access
- Operation access

¹ Historic England, 2019
² Broadland Development Management Plan, 2014/
 North Norfolk Local Development Framework, 2008/
 Breckland Local Development Plan, 2012
³ Natural England, 2019
⁴ North Norfolk Landscape Character Assessment, 2018/
 Broadland District Council LDF Landscape Character
 Assessment Supplementary Planning Document (SPD), 2013/
 Breckland District Landscape Character Assessment, 2007

| | |
|----------------|-------------------------|
| Project: | Report: |
| Norfolk Boreas | Environmental Statement |

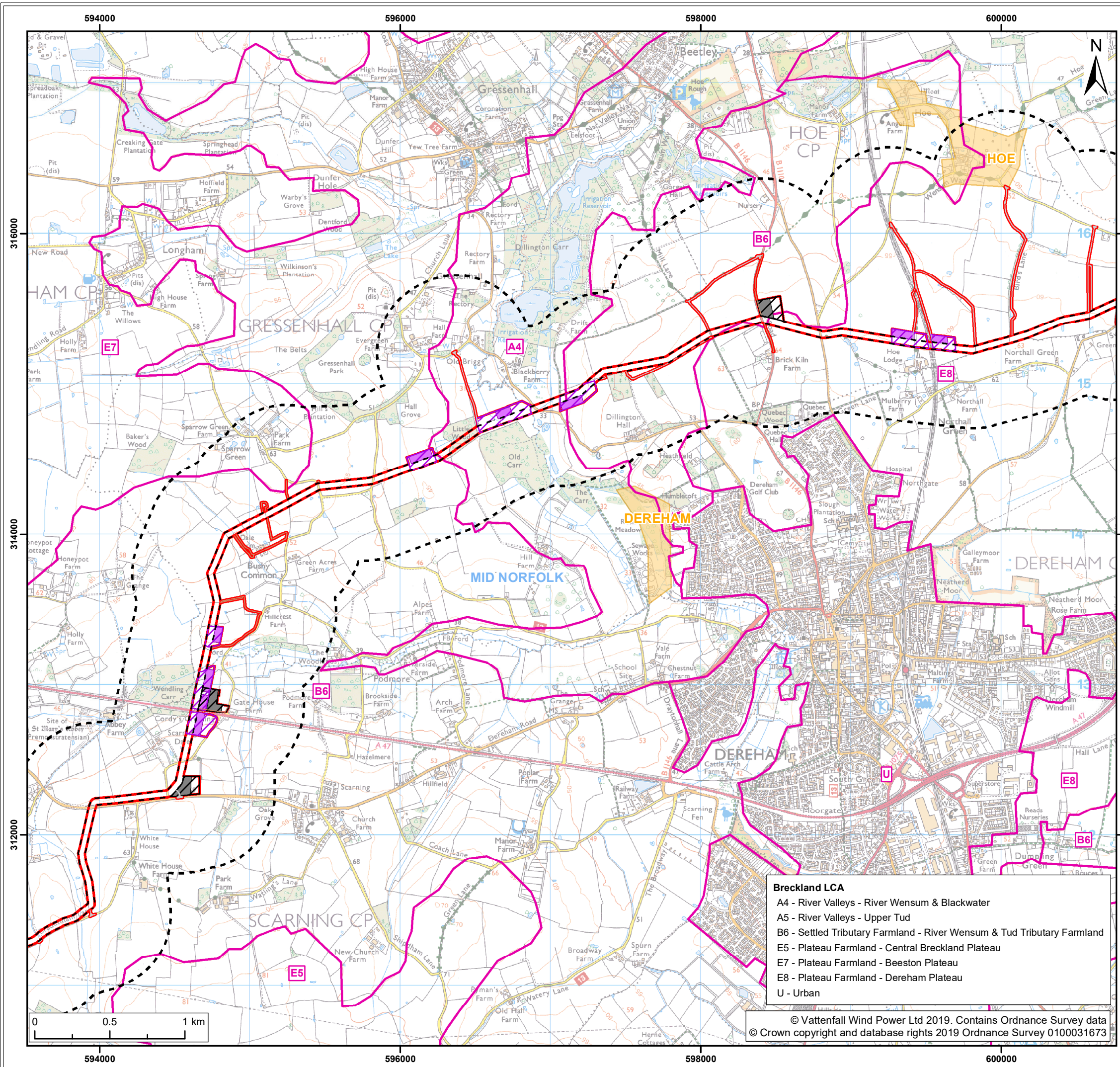
Title: Scenario 2
 Landscape Designations & Landscape Character Areas
 (map 7 of 9)

| | | | | | |
|---------------|--------------------------------|--------|----------|-------|----------|
| Figure: 29.13 | Drawing No: PB5640-006-029-013 | | | | |
| Revision: | Date: | Drawn: | Checked: | Size: | Scale: |
| 01 | 13/02/2019 | LA | JP | A3 | 1:25,000 |
| 02 | 21/02/2019 | LA | JP | A3 | 1:25,000 |

Co-ordinate system: British National Grid EPSG: 27700

Breckland LCA
 A4 - River Valleys - River Wensum & Blackwater
 A5 - River Valleys - Upper Tud
 B6 - Settled Tributary Farmland - River Wensum & Tud Tributary Farmland
 E8 - Plateau Farmland - Dereham Plateau
 U - Urban





Legend:

- Norfolk Boreas onshore red line boundary
- Study area 500m
- Local authority boundary
- Conservation area ²
- National character area ³
- Breckland landscape character area ⁴
- Onshore cable route
- Trenchless crossing zone (e.g. HDD)
- Indicative trenchless crossing compound
- Mobilisation zone
- Indicative mobilisation area compound
- Access
- Construction access
- Operation access

¹ Historic England, 2019
² Broadland Development Management Plan, 2014/ North Norfolk Local Development Framework, 2008/ Breckland Local Development Plan, 2012
³ Natural England, 2019
⁴ North Norfolk Landscape Character Assessment, 2018/ Broadland District Council LDF Landscape Character Assessment Supplementary Planning Document (SPD), 2013/ Breckland District Landscape Character Assessment, 2007

Project: Norfolk Boreas
 Report: Environmental Statement

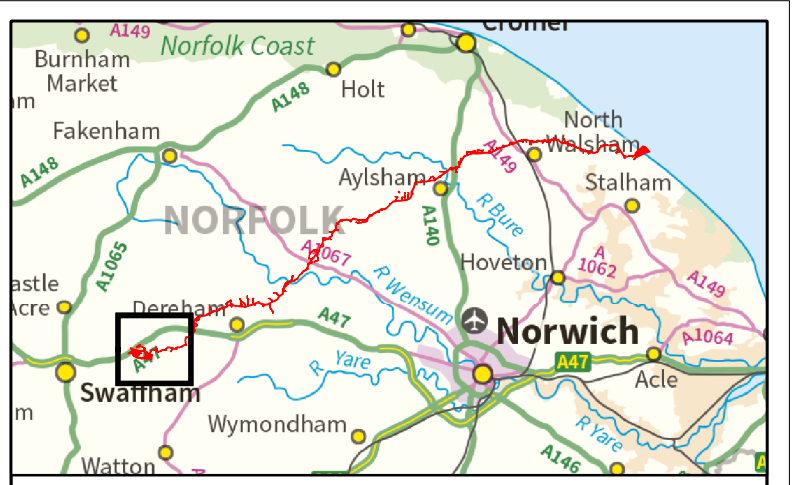
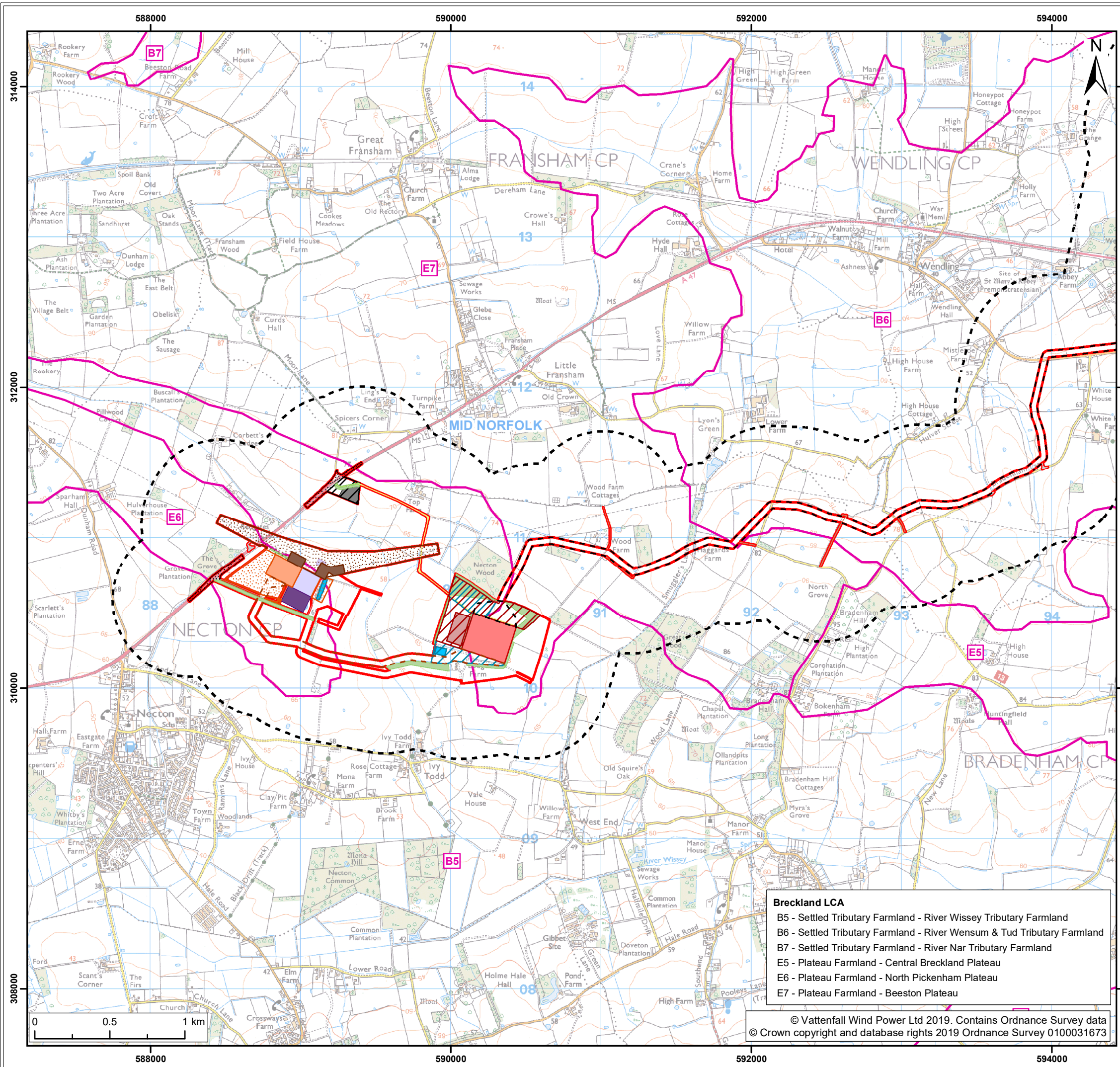
Title: Scenario 2
 Landscape Designations & Landscape Character Areas (map 8 of 9)

| | | | | | |
|---------------|--------------------------------|--------|----------|-------|----------|
| Figure: 29.13 | Drawing No: PB5640-006-029-013 | | | | |
| Revision: | Date: | Drawn: | Checked: | Size: | Scale: |
| 01 | 13/02/2019 | LA | JP | A3 | 1:25,000 |
| 02 | 21/02/2019 | LA | JP | A3 | 1:25,000 |

Co-ordinate system: British National Grid EPSG: 27700

- Breckland LCA**
- A4 - River Valleys - River Wensum & Blackwater
 - A5 - River Valleys - Upper Tud
 - B6 - Settled Tributary Farmland - River Wensum & Tud Tributary Farmland
 - E5 - Plateau Farmland - Central Breckland Plateau
 - E7 - Plateau Farmland - Beeston Plateau
 - E8 - Plateau Farmland - Dereham Plateau
 - U - Urban





Legend:

- Norfolk Boreas onshore red line boundary
- Onshore cable route
- Onshore 400kV cable route
- Mobilisation zone
- Indicative mobilisation area compound
- Onshore project substation
- Onshore project substation temporary construction compound zone
- Indicative onshore project substation temporary construction compound
- National Grid
- National Grid substation extension
- National Grid new / replacement OHL tower search area
- National Grid temporary works
- Overhead line temporary works
- Mitigation areas
- Attenuation pond zone
- Indicative attenuation pond
- Indicative mitigation planting
- Access
- Permanent access
- Construction access
- Operation access
- Highways temporary works area
- Existing substation locations
- Dudgeon substation
- Necton National Grid substation
- Study area 500m
- Local authority boundary
- National character area³
- Breckland landscape character area⁴

¹ Historic England, 2019
² Broadland Development Management Plan, 2014/
 North Norfolk Local Development Framework, 2008/
 Breckland Local Development Plan, 2012
³ Natural England, 2019
⁴ North Norfolk Landscape Character Assessment, 2018/
 Broadland District Council LDF Landscape Character
 Assessment Supplementary Planning Document (SPD), 2013/
 Breckland District Landscape Character Assessment, 2007

| | |
|----------------|-------------------------|
| Project: | Report: |
| Norfolk Boreas | Environmental Statement |

Title: Scenario 2
 Landscape Designations & Landscape Character Areas
 (map 9 of 9)

| | | | | | |
|---------------|--------------------------------|--------|----------|-------|----------|
| Figure: 29.13 | Drawing No: PB5640-006-029-013 | | | | |
| Revision: | Date: | Drawn: | Checked: | Size: | Scale: |
| 01 | 13/02/2019 | LA | JP | A3 | 1:25,000 |
| 02 | 21/02/2019 | LA | JP | A3 | 1:25,000 |

Co-ordinate system: British National Grid EPSG: 27700

- Breckland LCA**
- B5 - Settled Tributary Farmland - River Wissey Tributary Farmland
 - B6 - Settled Tributary Farmland - River Wensum & Tud Tributary Farmland
 - B7 - Settled Tributary Farmland - River Nar Tributary Farmland
 - E5 - Plateau Farmland - Central Breckland Plateau
 - E6 - Plateau Farmland - North Pickenham Plateau
 - E7 - Plateau Farmland - Beeston Plateau

